



HIND GROVE, POPLAR, E14

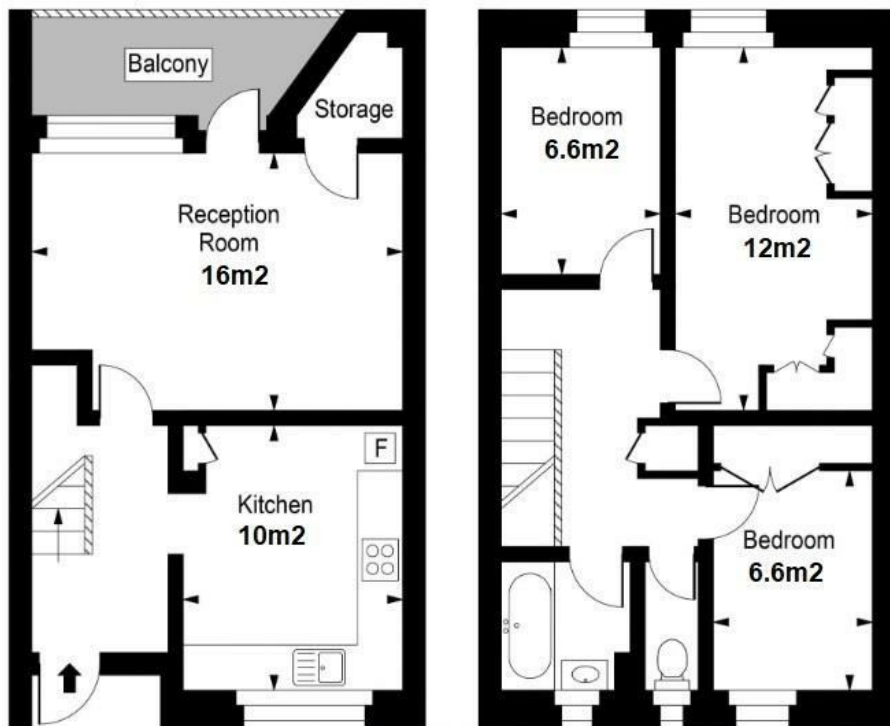
£2,500 PER MONTH

- HMO Licence - Suitable for sharers
- Private Balcony
- Part-Furnished
- Arranged Over Two Floors
- Great Transport Links
- Available end of August

wj.  
meade



# HIND GROVE E14



\*Please only use room sizes as a guideline. These are estimated and not 100% accurate



W J Meade are pleased to present this three bedroom flat to rent in Hind Grove. Arranged over two floors, this property has a large kitchen/ diner, lounge (with storage cupboard) which leads onto a private balcony. Upstairs there are three bedrooms, family bathroom and separate W/C. Available end of August. Part-furnished - three beds provided.

Deposit is 5 week's rent.

All sizes are approximate. The Agent has not tested any apparatus, equipment, fixtures and fittings, or services and so cannot verify that they are in working order or fit for the purpose. A buyer is advised to obtain verification from their Solicitors or Surveyor. Photographs are for illustration purposes only and may depict items, which are not for sale or included in the sale price. References to tenure of a property are based upon information supplied by the vendor. The agent has not had sight of the title documents, a buyer is advised to obtain verification from their solicitor. Money Laundering Regulations 2003: Intending purchasers will be asked to produce identification, documentation at a later stage and we would ask for your co-operation in order that there will be no delay in agreeing the sale.

These particulars are intended to give a fair description of the property only and are in no way guaranteed, nor do of any contract. They are issued on the express condition that all negotiations are conducted through W.J. Meade Estate Agents. All subject to contract and to being unsold.

Service charge £n/a  
Ground rent £n/a  
Reserve fund £n/a  
n/a years lease  
Council tax band C  
Current EPC Rating 67  
Tenure:

